

**CBS
STUDIO
CENTER™**

Newsletter

GREEK Undercover

By Jen K. & Matt Dickey

As the ABC Family Original Series *GREEK* embarks on its 50th episode here at CBS Studio Center, we thought it would be fitting to give you an inside look at how our show has tapped into the vast resources this lot has to offer. *GREEK* may be set on the expansive college campus of Cyprus Rhodes University (CRU) in Ohio, but CBS Studio Center acts as a wonderful surrogate campus because our production utilizes every available space to its utmost potential. This gives us the opportunity to bring tremendous scale and scope to *GREEK*'s ambitious storylines.

As you travel down the ramp into the depths below Stages 21, 22, and 23, the Greek life of CRU kicks into full gear at the fraternity houses of Kappa Tau Gamma (KTF- Kappa Tau) and Omega Chi Delta (ΩΧΔ- Omega Chi) along with the Zeta Beta Zeta (ZBZ) sorority house. These basement stages (21B, 22B, and 23B), which once housed *The Bernie Mac Show*, are often referred to as “the dead zone” because once you step in all cell phone reception with the outside world is cut off. Once a parking area, these stages prove to be a challenging space to film due to low ceiling heights and the need to schedule around productions shooting above. What other producers may have seen as constraints, our production team viewed as an opportunity to have an abundance of versatile sets housed in one place.

CBS Studio Center has made it possible to accommodate nearly all our departments (Assistant Director, Camera, Construction, Costume, Craft Service, Electric, Grip, Hair and Make-Up, Property, Set Decorating,



GREEK's sorority house Zeta Beta Zeta

Sound, and Transportation) on these basement stages, creating a small village of talented crewmembers that work together as a close “campus” community. This space has allowed our production to build three freestanding fraternity and sorority mansions complete with living rooms, dining rooms, bedrooms, and master staircases. ZBZ has a lavish kitchen and bathroom, while Omega Chi adds a refined touch with a study. The Kappa Tau house sports a TV room, basement, and even a backyard. An art history classroom and the ever-popular off-campus Irish pub Dobler's round out the permanent sets on our stages. We've even found room for “swing” sets including a secret society lair, airport terminal, Mexican cantina, billiard room, residence hall, and ballroom.

The favorable logistics of our stages has also made it possible for some of the exterior sets to be filmed to match locations on the lot. For instance, the rooftop of Kappa Tau has found its way to the top of our ramp for day and night exteriors. When the script called for a beach in the spring break episode, truckloads of sand were hauled in to bring the beach here.

The most recent addition to our show lies directly above the ramp leading down to our stages where the fully functional entrances to the Cyprus Rhodes Student Union and Brix Auditorium extend from the facades of Stages 22 and 23 along with planter boxes of foliage surrounding the area. With the addition of student activity booths, kiosks of flyers for upcoming campus events, combined with dressing of

CONTINUED PAGE 3

Studio Services

Carla's Café Commissary	5692
Car Wash	5042
Client Services	5099
Emergency Line	5555
Grip Dept	5711
Hair Salon	6000
Internet Access	5218
Joe's Gym	5099
Lighting	5349
Notary	5837
Parking Signs	5670
Paint Dept.	5396 / 5858
Safety Hotline	6078
Sign Shop	5395
Special Effects	5671
Supply Station	5001
Take 5 Coffee	5979

RECYCLING

Stage and Media	5661
<i>Paint, Solvents, Spray Cans, Rags, Brush Wash, Batteries, Videotape, CDs, DVDs</i>	
Office Recycling	5966
<i>Toner Cartridges, Paper, Cans</i>	
E-Waste Recycling	5396
<i>Anything with a circuit board, ie TVs, Monitors, Recorders, Keyboards, Florescent Lights</i>	

Safety & Security

PLEASE REMEMBER TO...

Drive within the 8 mph speed limit.

Stop at all Stop Signs.

Avoid blocking the roads when parking.

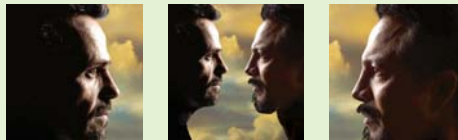
The Security Department would like to remind everyone that the Safety Hotline is anonymous and confidential. If you observe an unsafe situation, please report it by calling extension 6078. There is also a safety suggestion box located at Carla's Café.

Newsletter Staff

Contributing Editor Marsha Gorodkin
Design Elizabeth Gulick

PRODUCTION SCHEDULE

PHOTO: JAY SILVERMAN



CSI:NY

(CBS PRODUCTIONS/ CBS)

ENTERTAINMENT TONIGHT

(CBS TV DISTRIBUTION/ CBS)

THE INSIDER

(CBS TV DISTRIBUTION/ CBS)

THE CLEANER

(CBS PRODUCTIONS/ A&E)

ROAST OF JOAN RIVERS

(CENTRAL PRODS/ COMEDY CENTRAL)

TRACEY ULLMAN'S STATE OF THE UNION

(ALLAN MCKEOWN PRODUCTIONS/ SHOWTIME)

GARY UNMARRIED

(FTP PRODUCTIONS/ CBS)

RUBY AND THE ROCKITS

(FTP PRODUCTIONS/ ABC FAMILY)

UNITED STATES OF TARA

(BLIND DECKER PRODUCTIONS/ SHOWTIME)

ACCIDENTALLY ON PURPOSE

(CBS PRODUCTIONS / CBS)

BIG BROTHER 11

(OUR HOUSE PRODUCTIONS/ CBS)

RITA ROCKS

(RITA ROCKS PRODUCTIONS/ LIFETIME)

PARKS AND RECREATION

(OPEN 4 BUSINESS /NBC)

100 QUESTIONS FOR CHARLOTTE

(OPEN 4 BUSINESS/ NBC)

GREEK

(ZETA BETA PRODUCTIONS/ ABC FAMILY)



In which soap opera did *GREEK* star Spencer Grammer play a doctor?

ANSWER on page 6

HOLLYWOOD OVATIONS

61ST PRIMETIME EMMY AWARD NOMINATIONS

Outstanding Guest Actor in a Drama Series

CSI: NY

**EDWARD ASNER
AS ABRAHAM KLEIN**

Outstanding Casting for a Comedy Series

UNITED STATES OF TARA

**ALLISON JONES
CAMI PATTON, CSA
ELIZABETH BARNES, CSA,**

Outstanding Cinematography for a Half-Hour Series

ACCORDING TO JIM

GEORGE MOORADIAN, DIRECTOR OF PHOTOGRAPHY

Outstanding Hairstyling for a Single-Camera Series

TRACEY ULLMAN'S STATE OF THE UNION

EPISODE 202

MARTIN SAMUEL, DEPARTMENT HEAD HAIRSTYLIST

COLLEEN LABAFF, HAIRSTYLIST

Outstanding Lead Actress in a Comedy Series

SAMANTHA WHO?

**CHRISTINA APPELGATE
AS SAMANTHA NEWLY**

UNITED STATES OF TARA

**TONI COLLETTE
AS TARA GREGSON**

Outstanding Main Title Design

UNITED STATES OF TARA

Outstanding Original Main Title Theme Music

JAMIE CALIRI, DIRECTOR/DIRECTOR OF PHOTOGRAPHY/EDITOR/MAIN DIGITAL

COMPOSITOR

DAVE FINKEL, CREATOR

BRETT BAER, CREATOR

ALEX JUHASZ, ILLUSTRATOR

UNITED STATES OF TARA

TIM DELAUGHTER, MAIN TITLE THEME BY

Outstanding Prosthetic Makeup for a Series, Miniseries, Movie or a Special

TRACEY ULLMAN'S STATE OF THE UNION

EPISODE 205

MATTHEW MUNGLE, PROSTHETIC DESIGNER/ SPECIAL MAKEUP EFFECTS

DEPARTMENT HEAD

SALLY SUTTON CRAVEN, DEPARTMENT HEAD MAKEUP ARTIST

KATE SHORTER, ADDITIONAL MAKEUP ARTIST

AUGUST

LAST MONTH OF SUMMER

Gone to the beach!



Kappa Tau Gamma's backyard

the North Structure and stage walls with CRU banners, one could easily believe they were right in the heart of a college campus. A dodge ball gymnasium was previously constructed in this area and the front entrance to the nearby Norvet Building has been frequently used as the exterior of Cyprus Municipal Airport.

A quick jaunt across the Lot past the Broadcast Center and over the Los Angeles River, the famed *Gilligan's Island* lagoon served as site of the back-to-school carnival complete with Ferris wheel, dunk tank, and featuring a performance by the Plain White T's. This space has also been used as campus common grounds and the site of a wedding reception. The nearby Sater Structure was transformed into the CRU Titans football stadium and locker room entrance.

Over the hill on Residential Street, Greek Row emerges complete with Greek letters affixed to the Tucker House and surrounding bungalows. The lush lawns have also been fenced in for a wedding ceremony, ZBZ backyard barbeques, and childhood flashbacks.



Nearby Office Building 5 contemporary colonial façades has served as a college Administration building and valet parking entrance to an Italian restaurant. MPR9's versatility has proved beneficial as a hospital recovery room, chemistry building science lab, photo studio, and art gallery. Carla's Café has appropriately been utilized as the campus-dining hall. New York Street reveals the quaint college town of Cyprus complete with The Espresso Farm, Campus Supply Bookstore, Titan Theatre, Reno's Garage, Cyprus-Rhodes Courier and Ready, Set, Confetti!

As you travel the Lot, it's hard not to notice a reference to *GREEK* as exemplified by one of the many structures that have served as the series backdrop. Together with the limitless possibilities offered by CBS Radford's infrastructure and dedicated staff, *GREEK*'s talented cast, crew and production team are able to achieve their goal by bringing audiences to a college campus week after week.

You can catch *GREEK* returning for its third season on Monday, August 31st at 8pm.

Recent Staff Appointments & Promotions



PHOTO: CLIFF LIPSON/CBS

Tiffany Smith-Anoa'i

Tiffany Smith-Anoa'i has been appointed Vice President, Diversity & Communications, CBS Television, expanding her current role in the Communications Department and establishing a newly created executive position on the West Coast to build diversity efforts across the Company. Smith-Anoa'i segues to her new position after nine years in the Company's Media Relations and Publicity Department, most recently serving as Director, Communications. In addition to publicizing a wide range of entertainment programming, she developed communication strategies for diversity programs and managed the internship and mentoring program for the department.

Smith is an honors graduate of Howard University. She is also actively involved with Big Brothers Big Sisters and the Make-A-Wish Foundation. She lives in Los Angeles with her husband Reno Anoa'i and their daughter.





Joshua Choi, Jonathan Lu, Nick Leistner and Marisa Johnson

The Studio would like to announce the reorganization of the Information Technology Department. Nick Leistner will assume the Manager, Telecommunications position; Jonathan Lu will continue to serve as Manager, MIS; and Marisa Johnson will be Supervisor, Technology Services. This new organization will provide a single point of contact for information technology (phones and internet) for Studio clients, and will allow Nick and Jonathan to focus on the technical aspects of their responsibilities.

Nick will be responsible for both telephone switches (Studio and SCBC) all infrastructure, instruments and incoming and outbound lines.

Jonathan will continue in his role as manager and will now be responsible for all aspects of the Studio's data infrastructure, data center, servers, software and desktop support. Jonathan will also be responsible for internet and data services for all production on the lot.

Marisa will be responsible for client needs for technology services including telecommunication services, internet access, high speed data connections, remote access and exchange and wireless services.

Arts et Fleur
 818.730.6750
 jojirose@artsetfleur.com

- Event Planning
- Weddings
- Catering
- All Occasions
- Weekly Office & Lobby Installations



PHOTO: CLIFF LIPSON/CBS

CHARLIE DAVIS

Charlie Davis, an executive vp post production at CBS Films, died August 3 in Los Angeles. He was 51.

Davis joined CBS Films in March and oversaw post production and related activities on CBS Films' first three movies: *The Back-up Plan*, *The Untitled Crowley Project* and *Beastly*.

Before CBS Films, he served Marvel Studios as senior vp post production since 2006. He was a key liaison between the filmmakers and the company on *Iron Man* and *Beastly*.

A native of Tucson, Arizona, Davis also enjoyed a 15-year stint at 20th Century Fox, where his most recent title was senior vp feature postproduction. In that role, he facilitated post production needs of the advertising, visual effects and domestic/international distribution departments on numerous large-scale films including, *Night at the Museum*, the *X-Men* series and *Fantastic Four*.

CBS Films has set up a memorial scholarship fund for Charlie's sons Evan and Bryce. If individuals would like to donate, the fund is as follows:

All checks should be made out to the "Charlie Davis Memorial Fund" and should be sent to:

Scholarship America
 c/o Charlie Davis Memorial Fund
 One Scholarship Way
 St. Peter, MN 56082

WENDYANN CHANCELLOR BLAIR

Wendy Ann Chancellor Blair died of cancer on April 14, 2009 in North Hollywood. She was 70.

Blair enjoyed a long career in the entertainment industry, having served as the first female junior executive at CBS Television City in the mid-1950s. She worked as an associate producer and producer on a number of popular television series. Among the series she worked on as an associate producer are *Three's Company*, *The Ropers*, *Three's A Crowd* and several variety shows and specials for companies including Dick Clark Productions and Sid and Marty Krofft Enterprises. Her producer credits include pilots and series such as *What a Country!* and *I Married Dora*. She later segued from working in production to serving as the manager of business operations for The Smothers Brothers and was active in this role up until the beginning of 2009.

Blair was devoted to her family and family traditions. She is survived by her husband Tony, three children, and a number of nieces, nephews, grandnieces and grandnephews.



Weddings, Kids and such



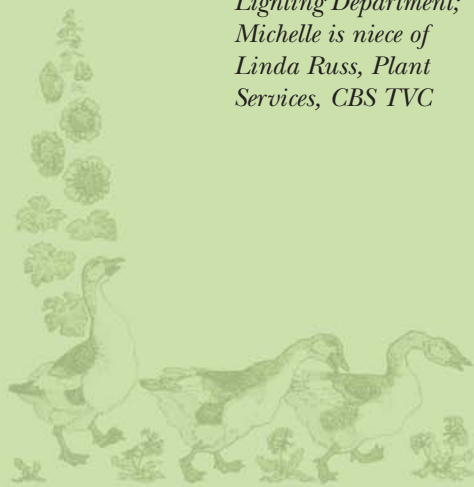
Kevin and Elizabeth Dixon and big brother Bodhi
On the birth of your daughter
Serena Sage
March 3, 2009
Kevin works in the Operations Construction Department.



Michael and Anna Marie Magro and big brothers William and Luke
On the birth of your son
Jack Michael
May 7, 2009
Also congrats to Grandma, Clara Schwartz and Aunt, Lisa Schwartz



Jeff and Michelle Nakamura, and big brother Hayden
On the birth of your son
Jordan Kaleo O Kalani
July 27, 2009
Jeff works in the Set Lighting Department; Michelle is niece of Linda Russ, Plant Services, CBS TVC



Environmental Tips from

David Limon

THE GREEN SCENE

BACK TO SCHOOL FOR YOUR LITTLE ENVIRONMENTALIST

As the back to school commercial goes, it's the most wonderful time of the year. Most parents though don't take the opportunity to turn this supply shopping ritual into a learning experience for their kids. Since many kids are conscience of their natural environment and the need to preserve it, use this years outing to reinforce conservation and sustainability.

Start with the supplies themselves by adopting Reduce, Reuse, Recycle to guide your resupply. Sit down with your kids and identify the supplies you already have available to reuse. When shopping, opt to buy only materials with post-consumer recycled product and in small quantities. Do kids really need 40 pens and a six pack of glue sticks?

There are alternatives to virgin materials for every product on your list, in realistic quantities and great designs. Many of the most creative ideas and designs can be found in eco-friendly products. Some of the coolest products I have seen are the Smecil made out of newspapers, the YakPak made out of old billboard substrates and my favorite alternative to lead soaked vinyl lunch boxes, the Kids Konserve Waste Free Lunch kit which replaces juice boxes and plastic bags.

The goal though isn't to buy buy buy, but to educate your kids on consumption and conserving. Share the guidelines of conscience consumerism with your kids and let them choose their supplies. I am sure you will be pleasantly surprised.

Catering

Delivery
to the lot for individual orders

Take Out

Dining In
we're just moments away



ITALIAN CAFE

- Salads
- Pizzas
- Subs
- Pasta
- Chicken Dishes
- Seafood Dishes

10820 Ventura Boulevard
Studio City • 818-762-4225
www.zachscfe.com



Mexicali
COCINA • CANTINA

CBS EMPLOYEES AND TENANTS
ENJOY 30% OFF YOUR CHECK
EVERYDAY 11:30 AM - 4:00 PM

(PLEASE PRESENT BADGE FOR DISCOUNT)

12161 VENTURA BOULEVARD
STUDIO CITY, CALIFORNIA 91604
818-985-1744

(DOES NOT INCLUDE LOCO LUNCH, ALCOHOLIC BEVERAGES, TAKE-OUT OR ANY OTHER OFFER)

World Famous
Vitello's Restaurant
EST. 1964
Italian Cuisine

Opera, Jazz or Cabaret Singers perform in one of our private music rooms throughout the week.

Private parties can be held "Upstairs at Vitello's" or in our festive "Green Room" both rooms have large screen TVs available for presentations.

WE DELIVER!

Show your CBS badge and save 15%


Lunch Hours
7 Days a Week
12:30 am to 4:00 pm

Dinner Hours
7 Days a Week
Sunday thru Thursday
4:00 pm to 10:00 pm
Friday & Saturday
4:00 pm to 11:00 pm

(818) 769-0905
www.vitellosrestaurant.com
4349 Tujunga Ave, Studio City




Full Catering Services Available!
Special Sushi Parties - Cocktail Parties - Private Parties
Buffet Style with Dessert Station




AHI SUSHI

Patio Sake Lounge
www.ahisushi.com



12915 Ventura Blvd. @ Coldwater Canyon
Studio City, CA 91604 • 818-981-0277



gangadin
finest indian cuisine

Since 1984 • Serving in same location for 24 years!

Some comments from critics:

If you find better Indian food than Gangadin, I'd like to know about it.
L.A. WEEKLY

Gangadin is a small, elegant Indian Restaurant notable for its excellent grade meats and almost oil free vegetarian dishes.
L.A. TIMES

Now judge for yourself!
Visit our Booth at Farmer's Market on Sundays and join us for combination lunches 10:30 am – 1:30 pm.

Now serving excellent Vegan entrees!
... around the corner from CBS.

5 ITEM LUNCH SPECIAL
Starting at \$8.95

Lunch: Mon thru Fri • 11:30am to 2pm
Dinner: Mon thru Sun • 5:30pm to 10pm

TAKE OUT • DELIVERY • CATERING
12067 Ventura Place • Studio City 91604
(818) 509-0722

 PRINTED ON RECYCLED PAPER
CONTAINING A MINIMUM OF 10%
POST-CONSUMER RECYCLED CONTENT

3962 LAUREL CANYON BOULEVARD • STUDIO CITY, CALIFORNIA 91604
PHONE [818.509.0003] FAX [818.509.8932]

nuprint
&
GRAPHICS, INC.

FULL COLOR PRINTING • HIGH SPEED COPYING
HEADSHOTS • COLOR OUTPUT • GRAPHIC DESIGN
FILM OUTPUT • HEADSHOTS • STAPLING
DIE-CUTTING • MATCHPRINTS • FOIL • LAMINATION
BUSINESS CARDS • LABELS • POSTERS • SCANNING


To place ads in this publication... please call Marsha, Client Services at (818) 655-5099

AD SIZES & RATES

Single	2.5"w x 1.5" tall\$50
Double	2.5"w x 3" tall\$100
Triple	2.5"w x 4.5" tall\$150
2xDouble	5.25"w x 3" tall\$200
2xTriple	5.25"w x 4.5" tall\$300

Artwork must be submitted in high res (300dpi) in pdf, psd, eps, tif or jpg.

File correction rates are billed at \$40/hour with a one hour minimum.

 *trivia answer*

Spencer Grammer played Dr. Lucy Montgomery on *As The World Turns* for 96 episodes before landing the role as Casey Cartwright on ABC Family's hit series *GREEK*.

